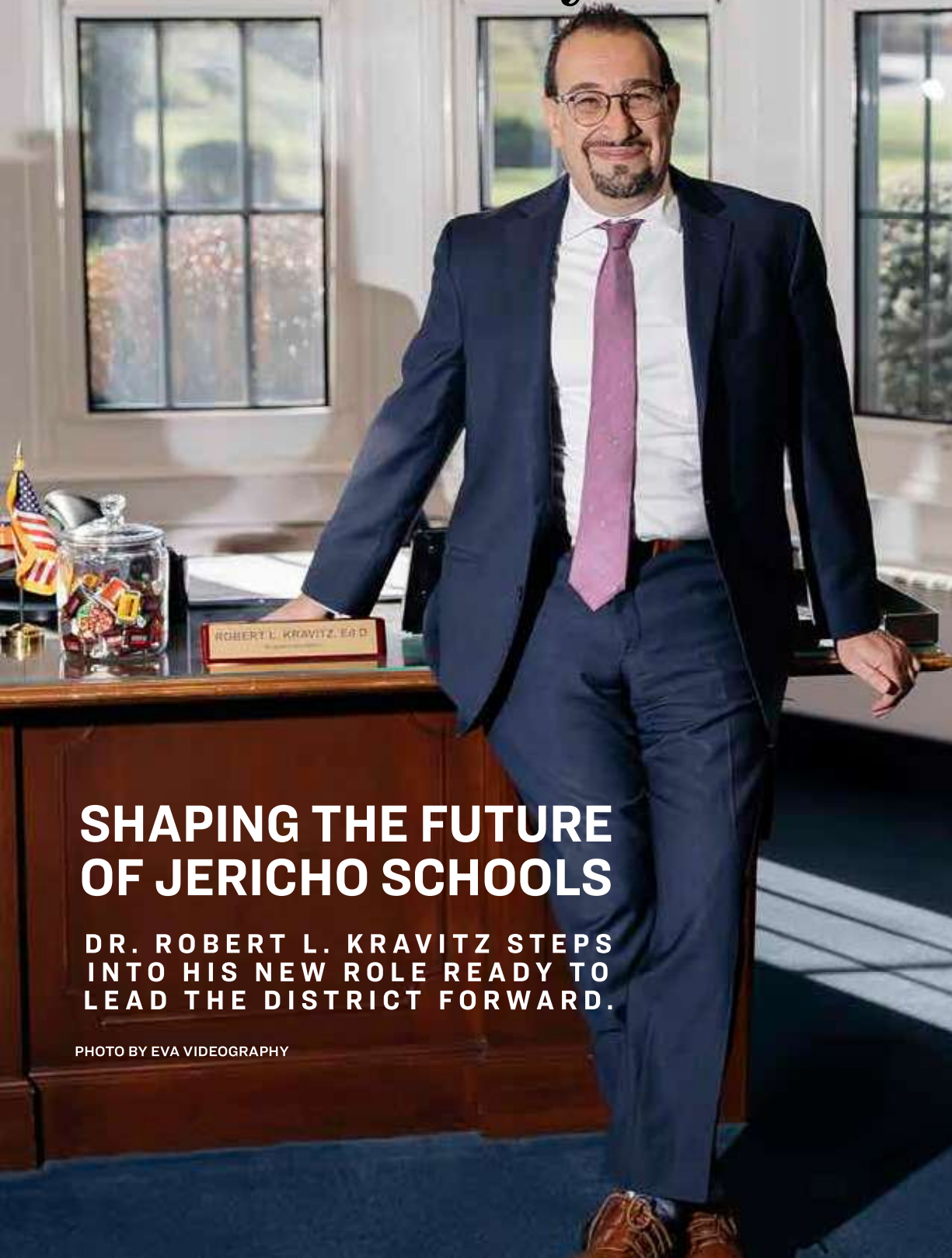


# STROLL

## Old Westbury



### SHAPING THE FUTURE OF JERICHO SCHOOLS

DR. ROBERT L. KRAVITZ STEPS  
INTO HIS NEW ROLE READY TO  
LEAD THE DISTRICT FORWARD.

PHOTO BY EVA VIDEOGRAPHY





# Reality Redefined

*Real, Surreal, Photoreal*  
Opens at The Nassau  
County Museum of Art

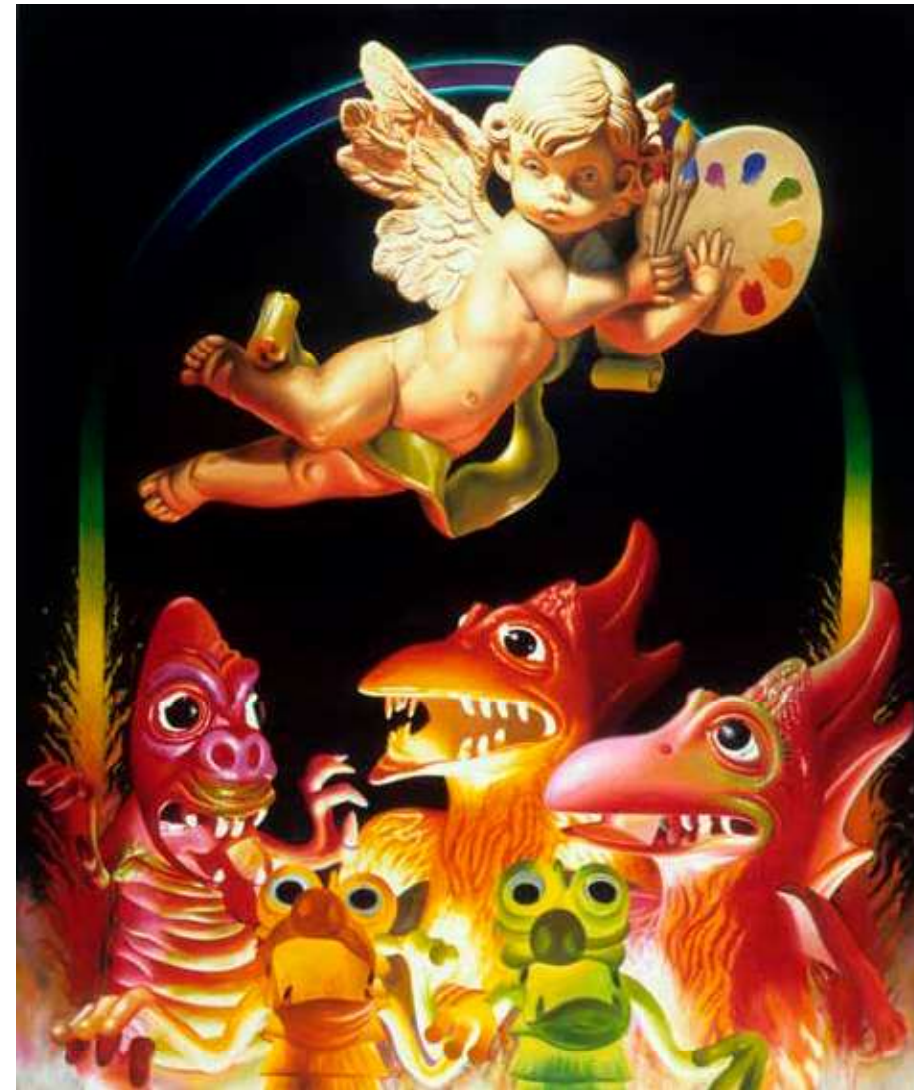


Man Ray (Emmanuel Radnitzky) (1890-1976), *Observatory Time: The Lovers (A.15)*, 1967, Lithograph on paper; H. Manes Art Foundation. © Man Ray 2015 Trust / Artists Rights Society(ARS), NY / ADAGP, Paris 2025.

Set on the historic Frick Estate grounds, the Nassau County Museum of Art has unveiled its latest major presentation: *Real, Surreal, Photoreal*. Running now through March 8, 2026, this must-see exhibit invites visitors into a reality that is uncertain, where dreams take shape and the line between fact and imagination disappears.



Glen Hansen (b. 1961), *Nomad, 2015*. Oil on panel, 48 x 48 inches. Courtesy of the artist.



Charles Bell (1935-1995), *Art Angel, 1986*, Oil on canvas, 72 x 60 inches. Courtesy of Louis K.Meisel Gallery. © Charles Bell, 2025. Image courtesy of Louis K. Meisel Gallery.

***“Real, Surreal, and Photoreal*  
invites visitors to  
look closely at the  
relationship between  
art and reality.”**

—NCMA EXECUTIVE DIRECTOR  
BETH HORN

*Real, Surreal, and Photoreal* features more than 120 works from 80 American and European artists, including portraits by such noteworthy Realists as John Currin, Edward Hopper, Reginald Marsh, and Fairfield Porter; rare tapestries and works on paper by Surrealist masters Salvador Dalí and Man Ray; vibrant paintings by Alex Katz, Roy Lichtenstein, John French Sloan, and William James Glackens; a screenprint self-portrait by Chuck Close; still lifes by Janet Fish and Jane Freilicher; and sculpture by John Grande and Long Island native Carole A. Feuerman.

## Your Partner in Protecting Property, Business, and Building Wealth

- High Value Homes
- Commercial Businesses
- Jewelry and Artwork Coverage
- Financial Services



**Ready to Learn More? Connect with Our Experts Today!**

516.400.5055 | [CostRiskPlanners.com](http://CostRiskPlanners.com)  
285 Jericho Tpke Mineola, NY